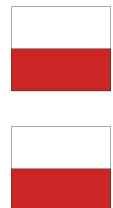
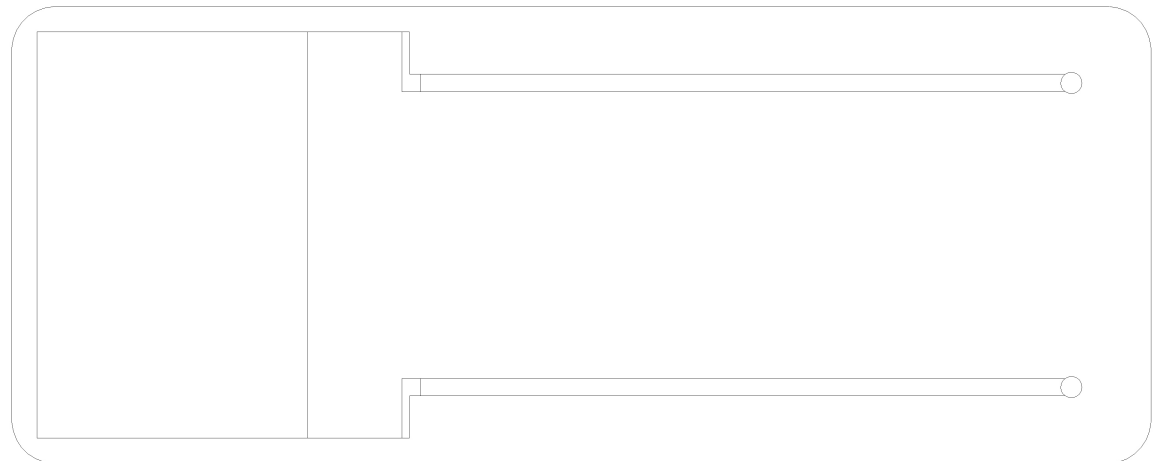


Dachstützen vorn



Micro-Wellpappe oder 1mm Karton



Dachstützen vorn mit Holzspießen formen

Architekt: Hans Poelzig (1869-1936)

HO Tankstelle der Reichskraftsprit GmbH 1923
 Maßstab 1/87 - Zeichnung 01/05
 © 2008 Godwin T. Petermann, D

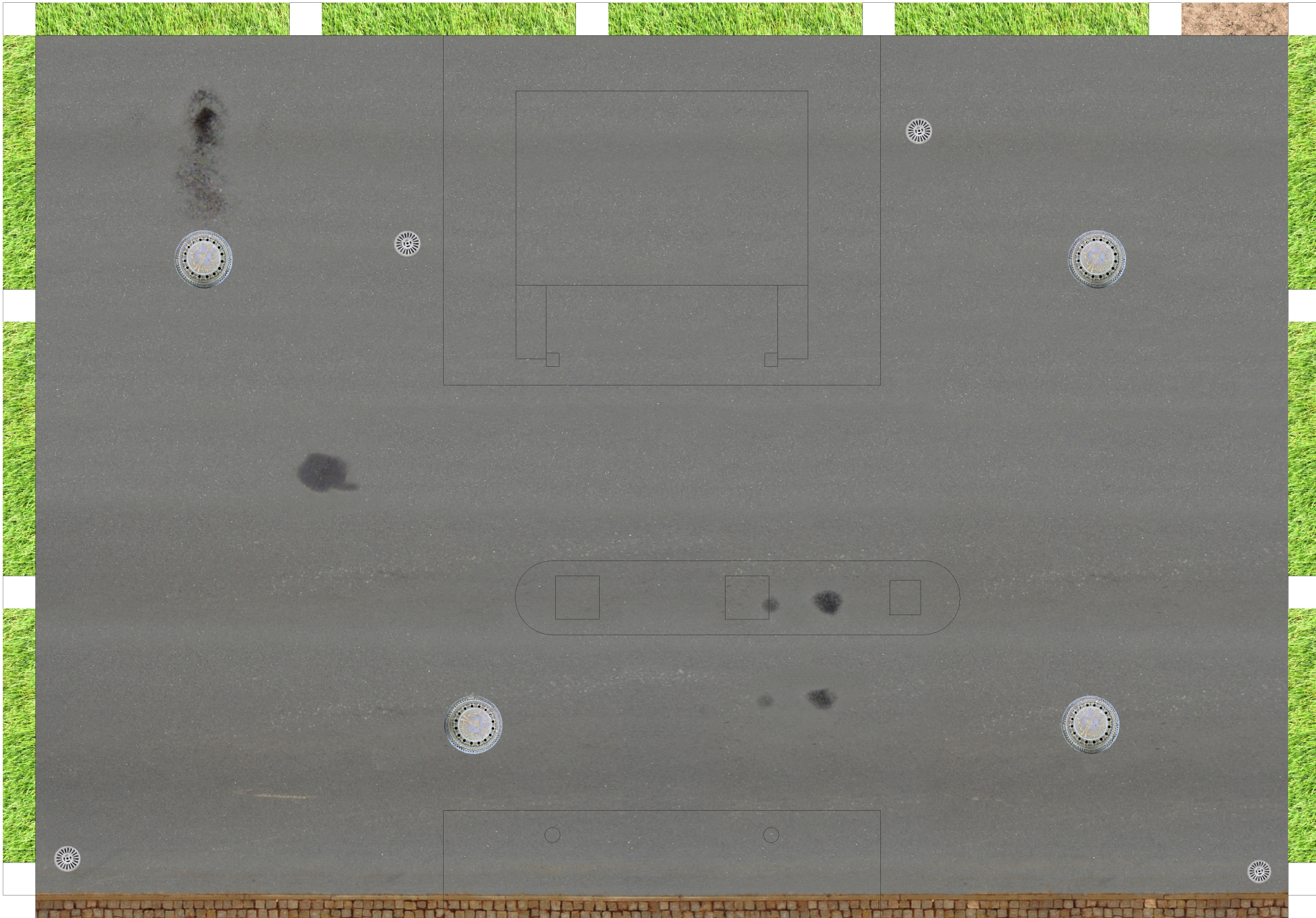
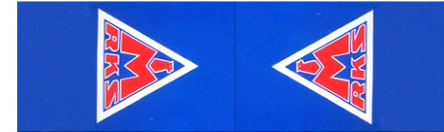
Das Kartonmodell entstand unter Auswertung von Materialien des Architekturmuseums der TU Berlin.

HO

Tankstelle der Reichskraftsprit GmbH 1923
Maßstab 1/87 - Zeichnung 02/05
© 2008 Godwin T. Petermann, D

0 1 2 3 4 5 6 7

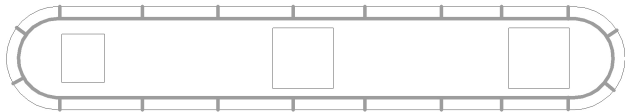
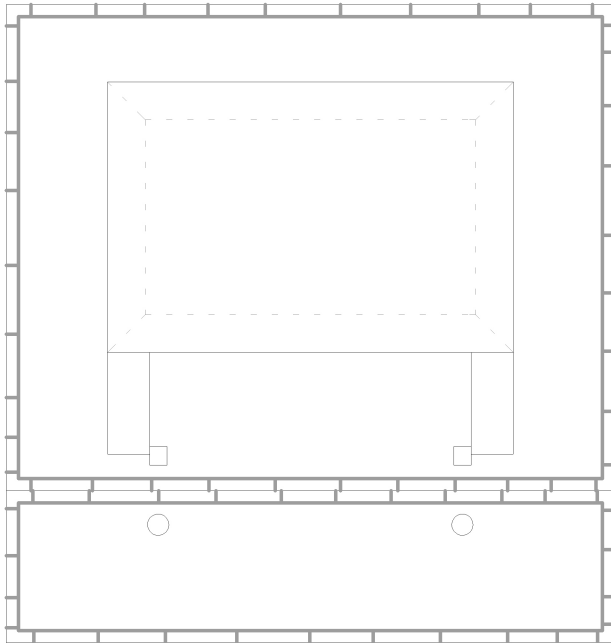
Fahne für Fahnenstange



HO

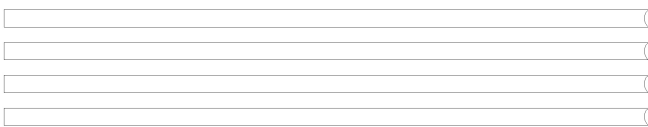
Tankstelle der Reichskraftsprit GmbH 1923
Maßstab 1/87 - Zeichnung 03/05
© 2008 Godwin T. Petermann, D

0 1 2 3 4 5 6 7

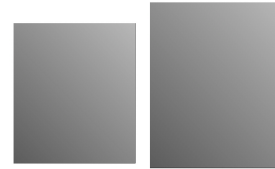


Grundplatten für Gebäude
und Zapfsäulen

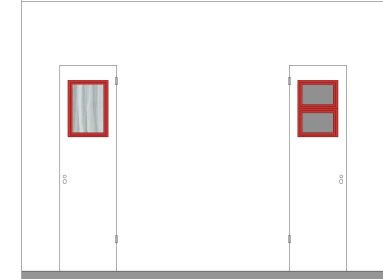
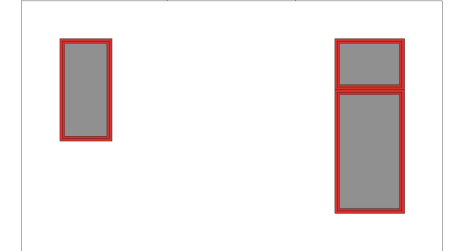
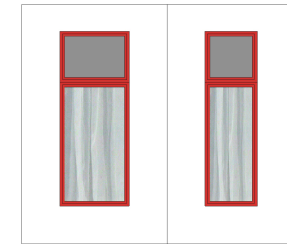
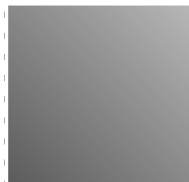
1 mm weißer Karton



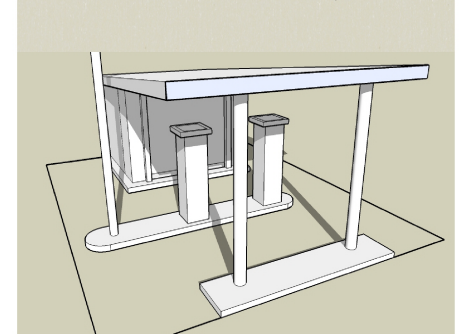
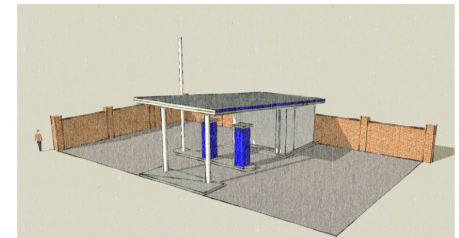
Rauchen verboten / Rauchen verboten / Rauchen verboten / Rauchen verboten

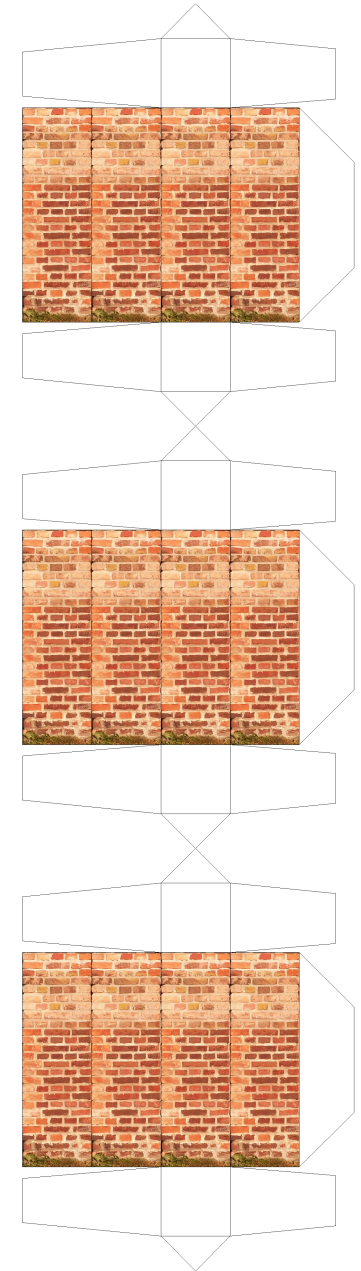


Werbetafeln nicht freigegeben

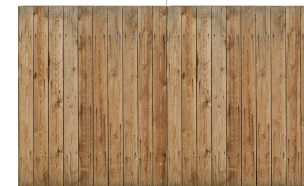
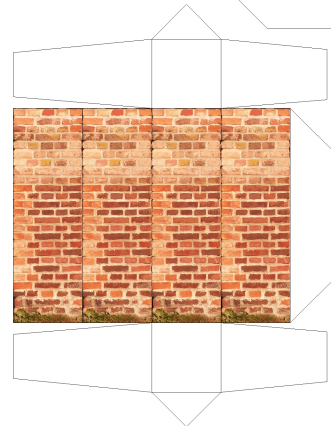


Hochglanzkarton

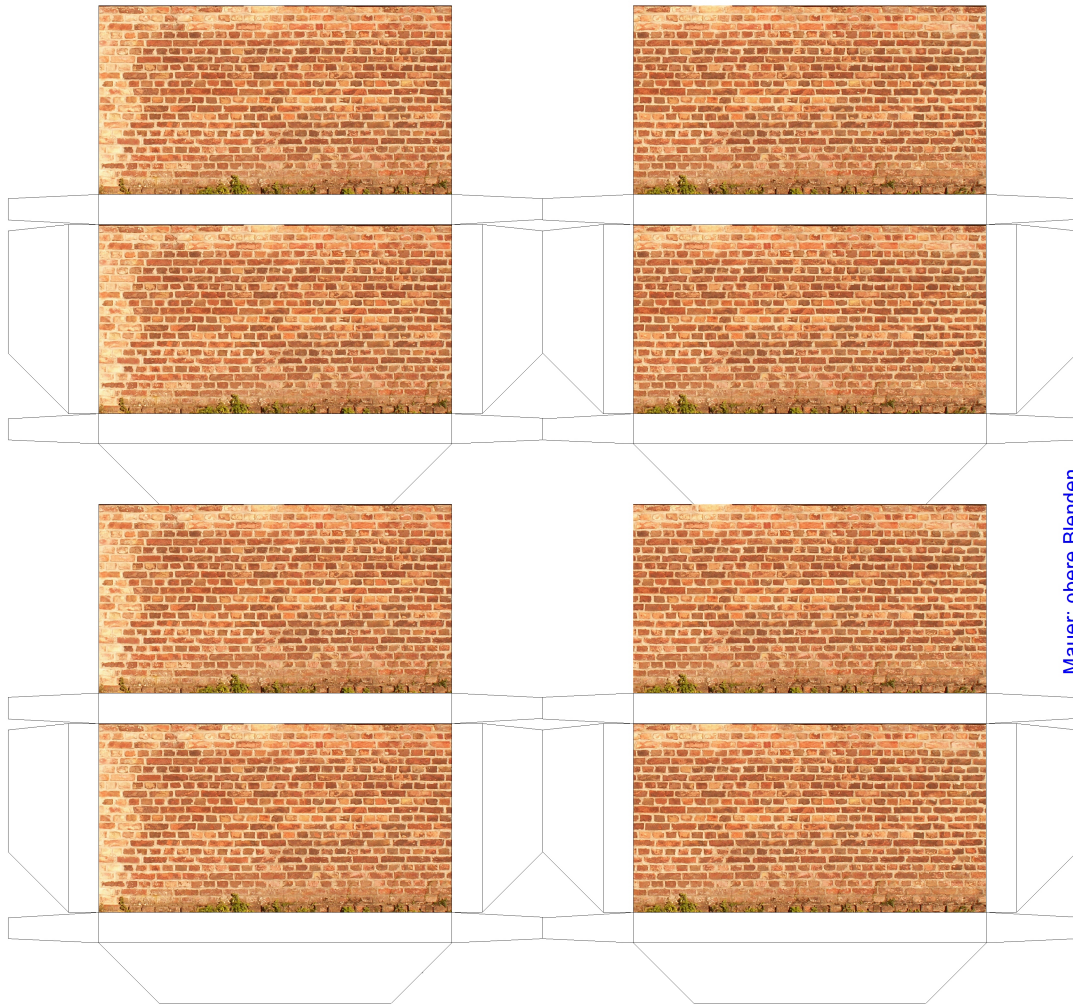




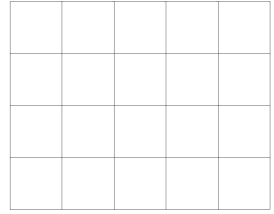
Umrandung als Option



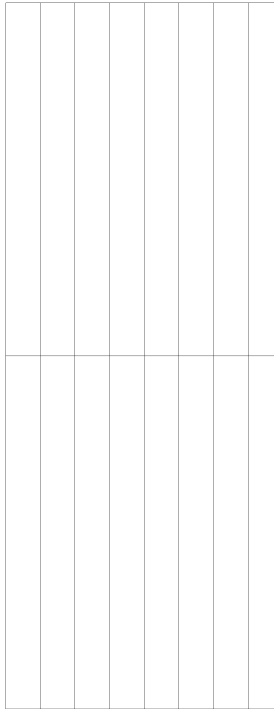
| | |
|-----------|---|
| HO | Tankstelle der Reichskraftsprit GmbH 1923 |
| | Maßstab 1/87 - Zeichnung 04/05 |
| | © 2008 Godwin T. Petermann, D |
| | |



Säulen: obere Blenden

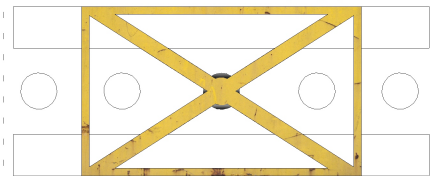
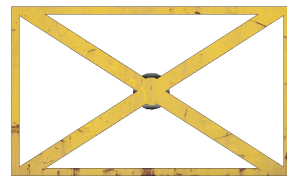
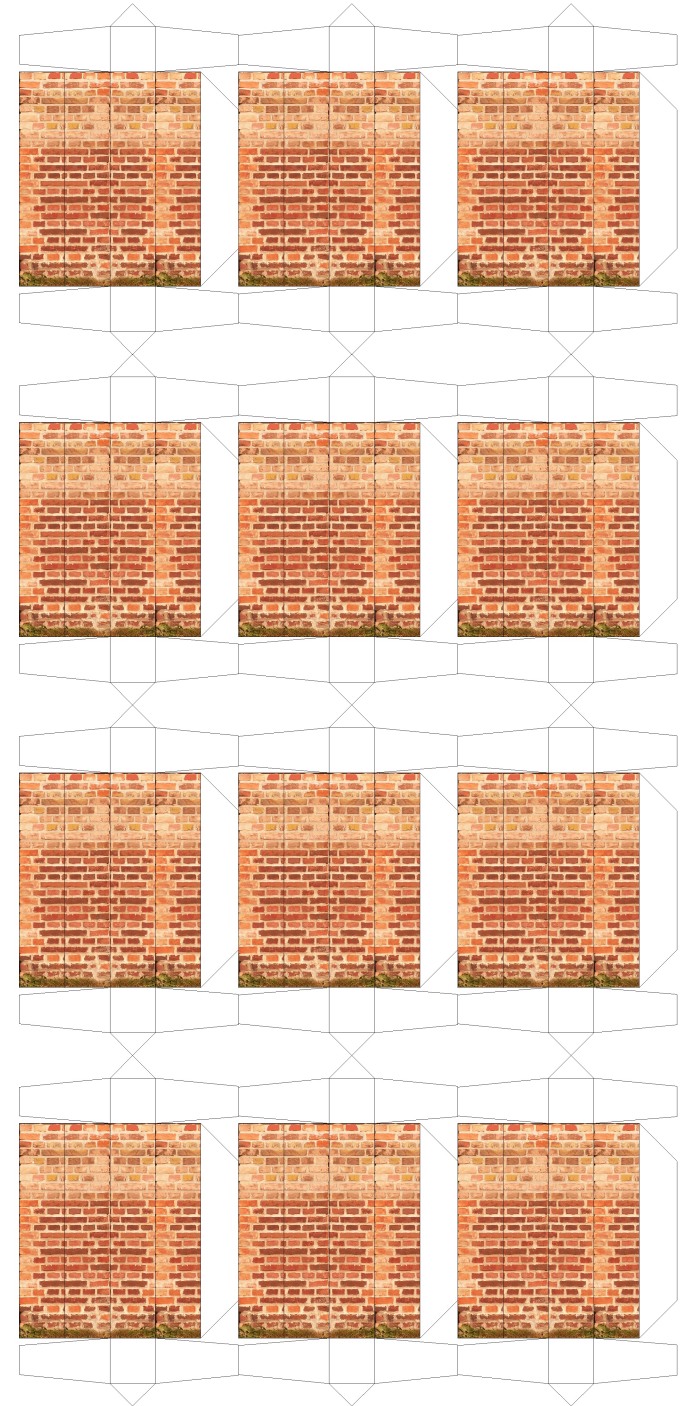


Mauer: obere Blenden



dünner Graukarton

Graupappe 1mm



HO Tankstelle der Reichskraftsprit GmbH 1923
 Maßstab 1/87 - Zeichnung 05/05
 © 2008 Godwin T. Petermann, D

