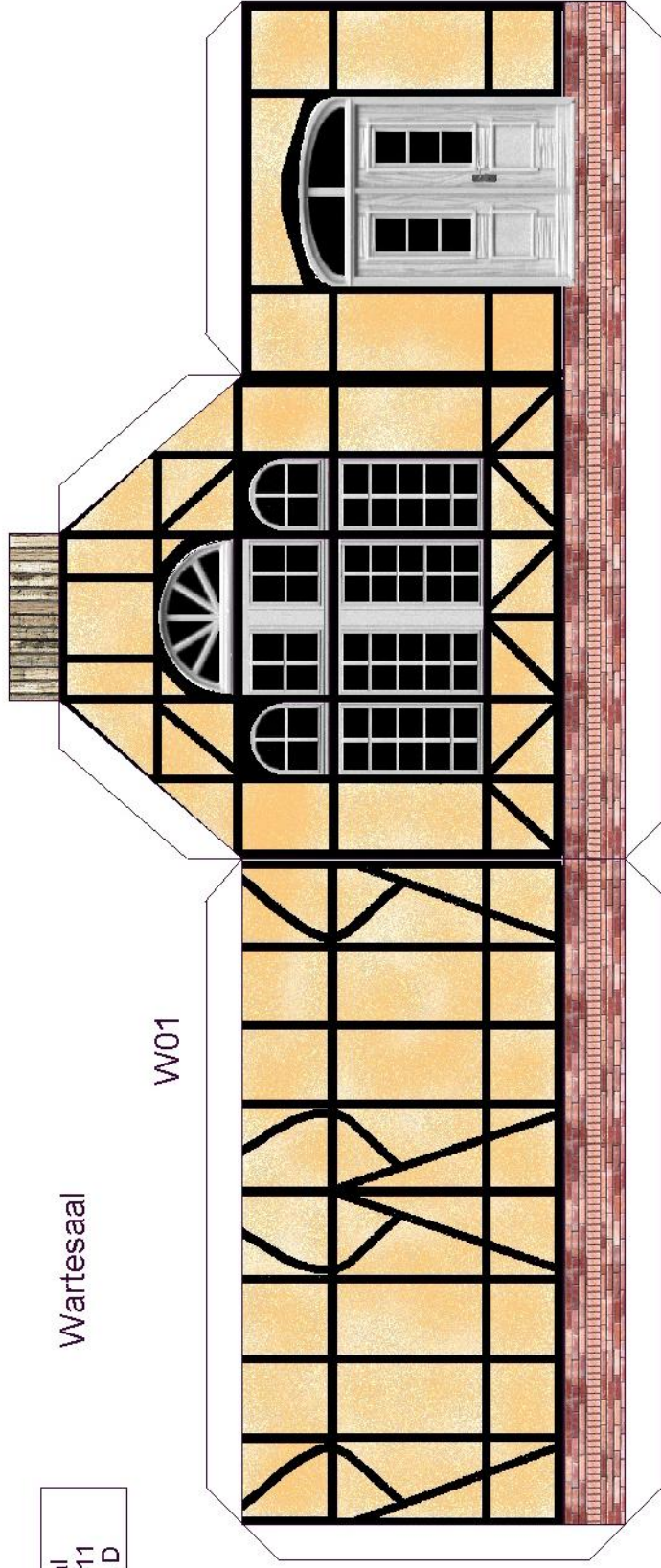
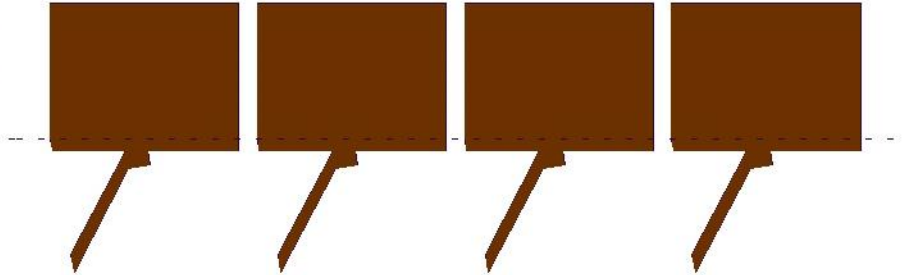


Wartesaal

W01

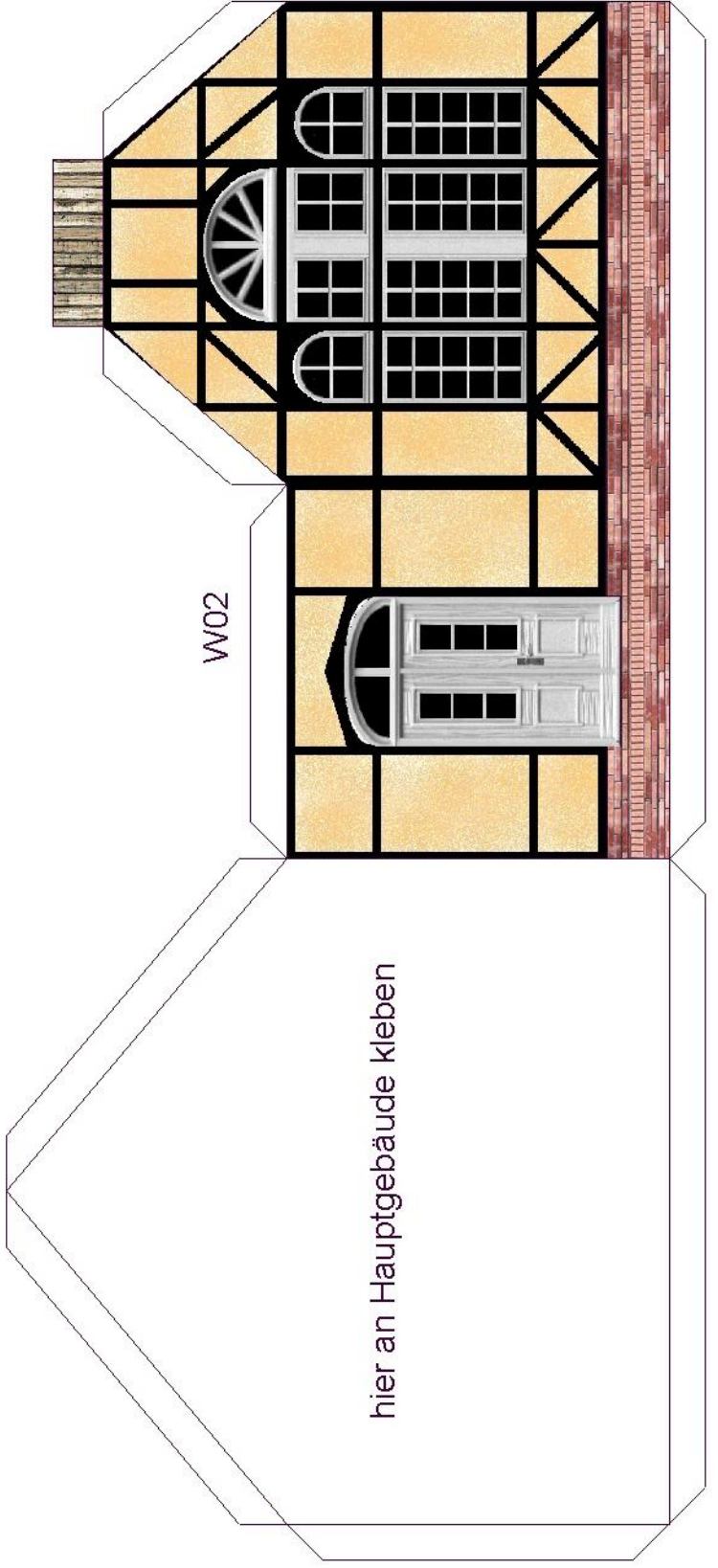


Dachstützen Güterschuppen

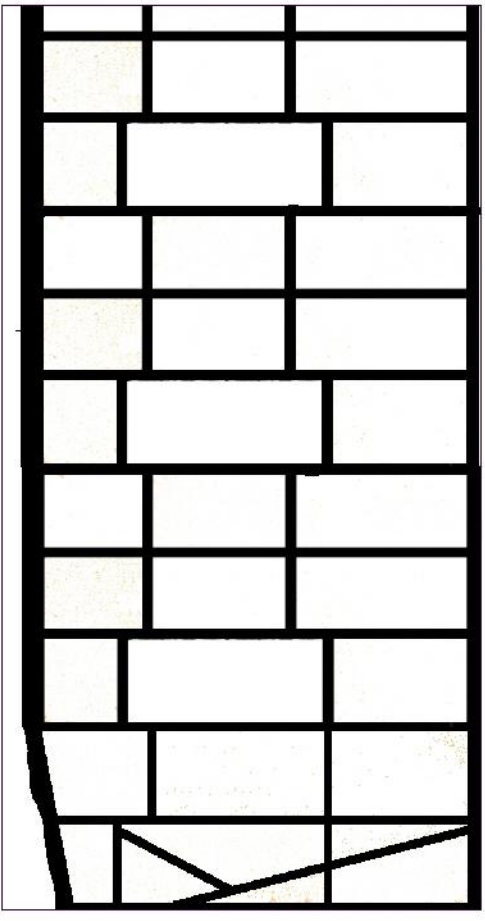
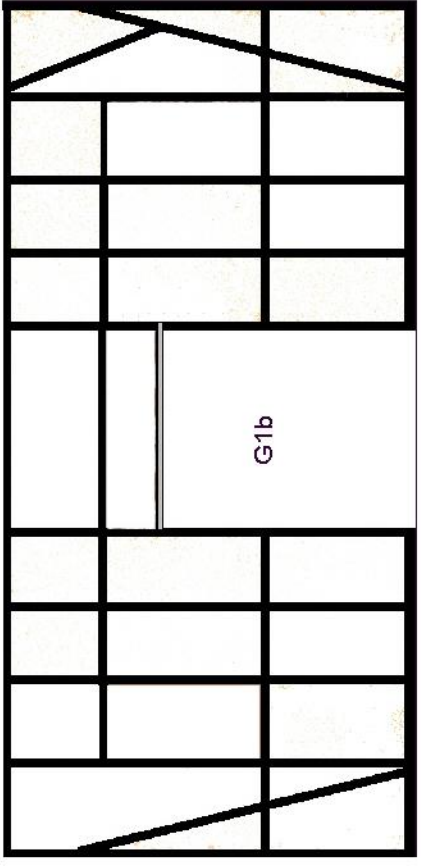


W02

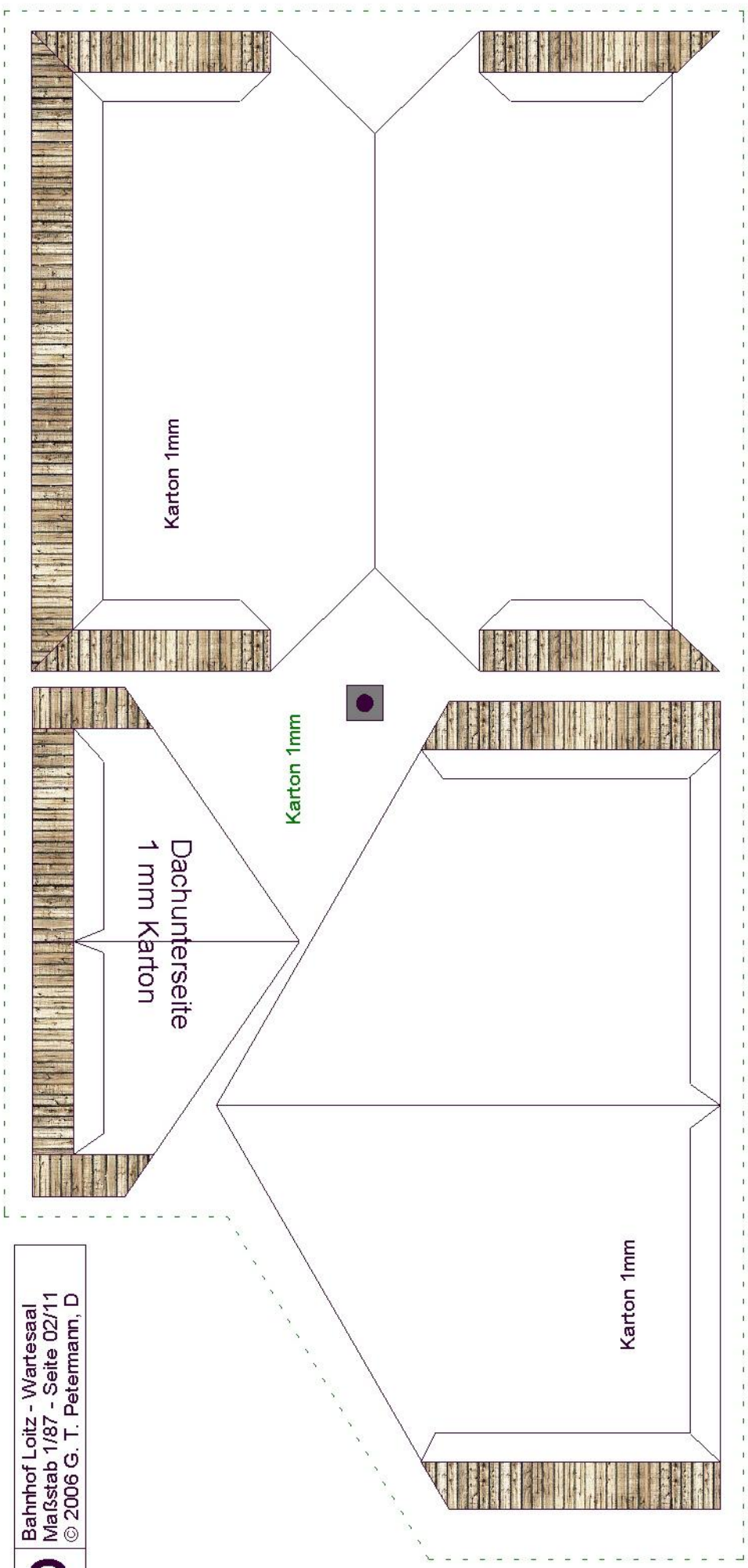
hier an Hauptgebäude kleben

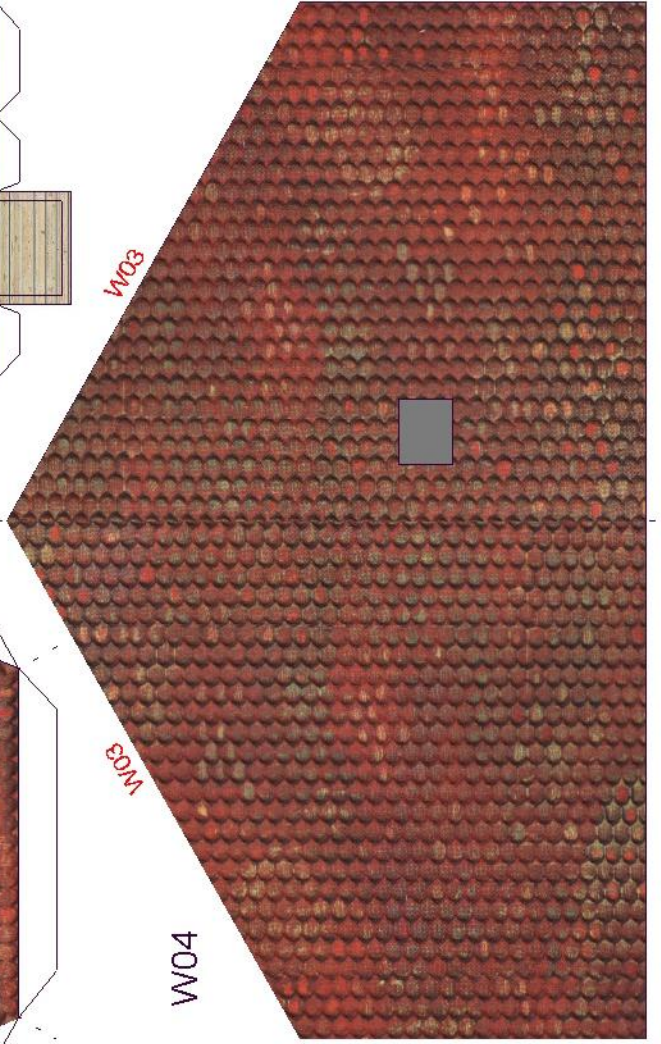
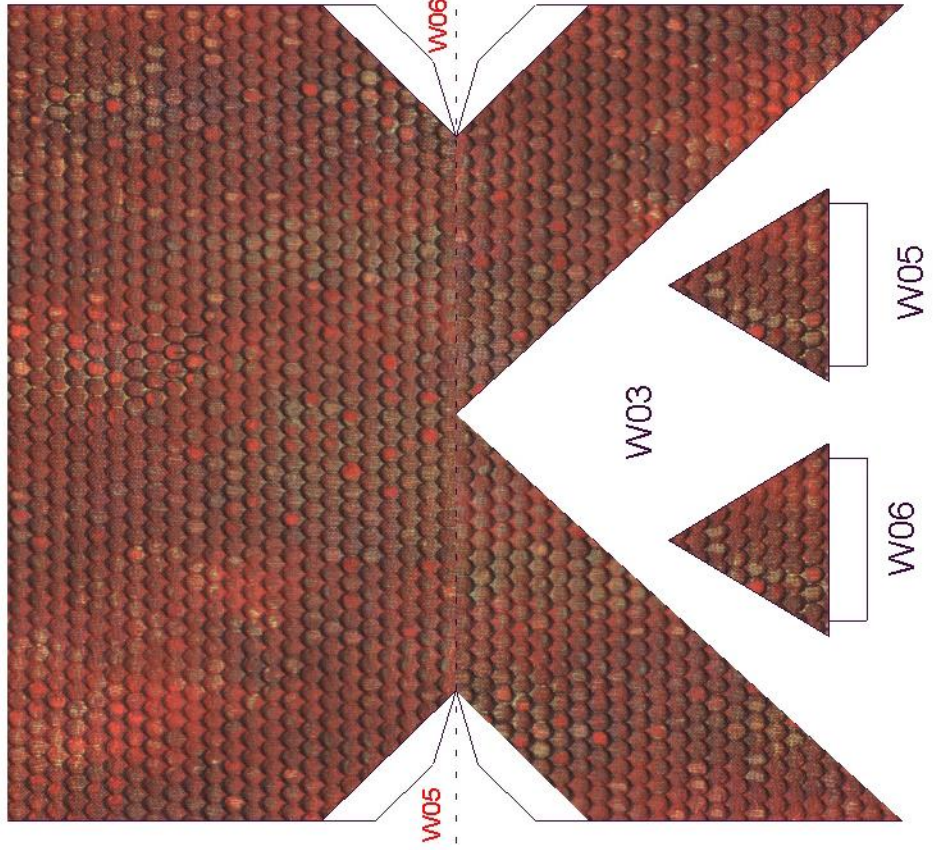
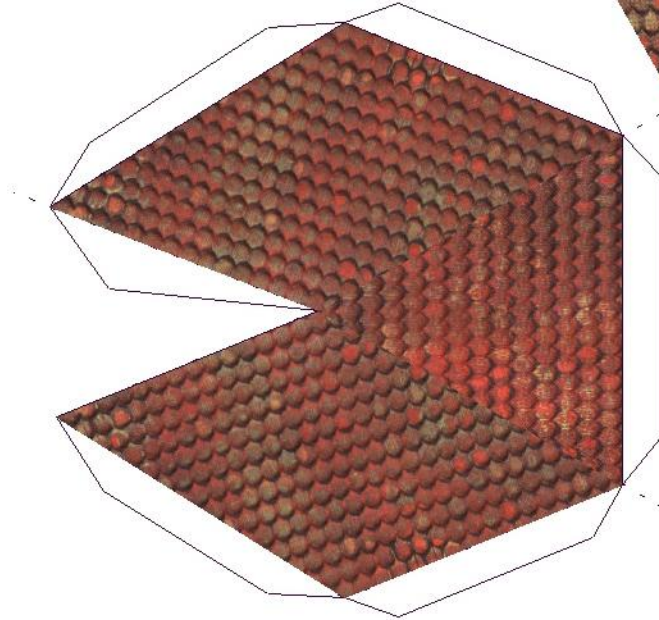
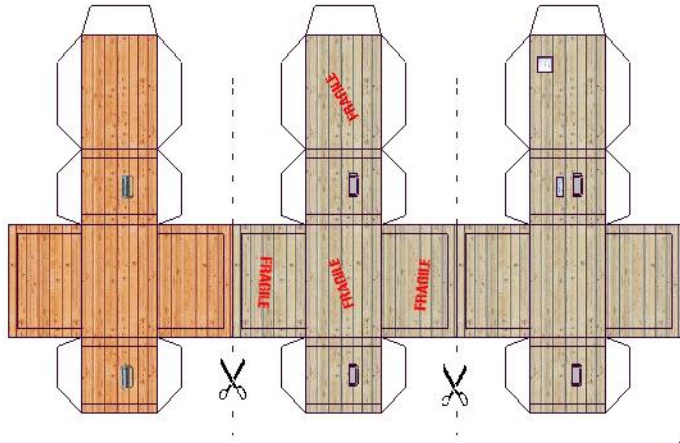
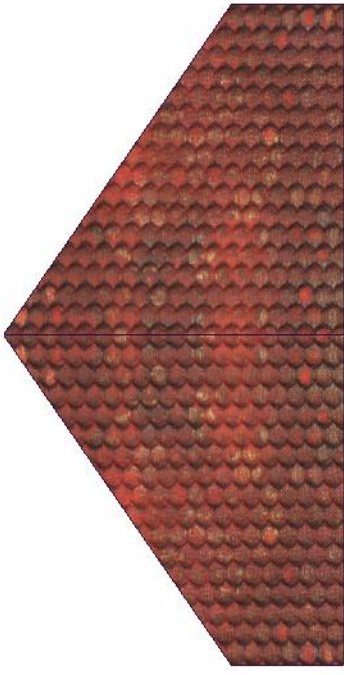
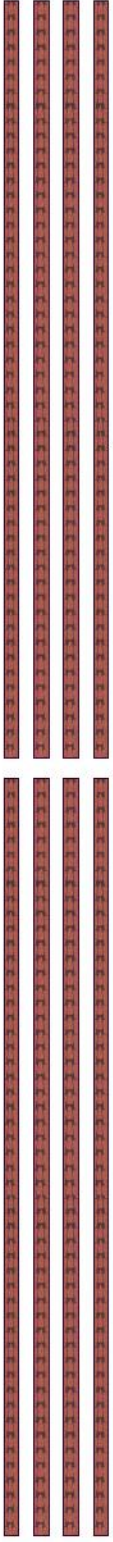


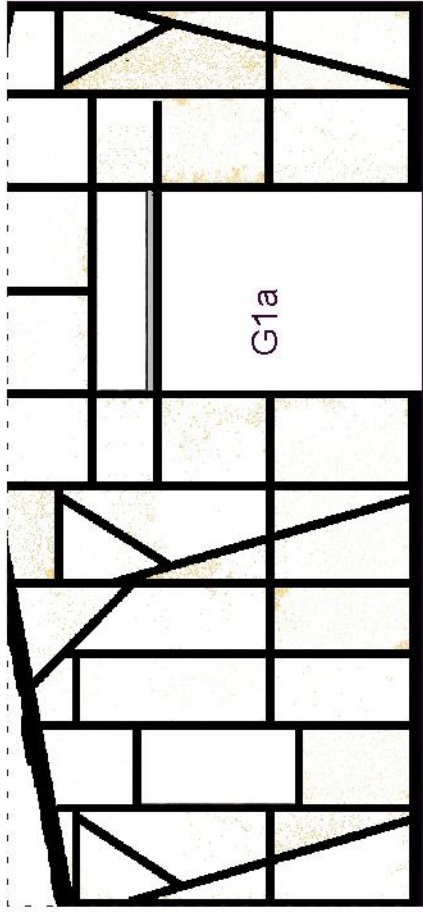
Innenwände



**HO**  
Bahnhof Loitz - Wartesaal  
Maßstab 1/87 - Seite 02/11  
© 2006 G. T. Petermann, D



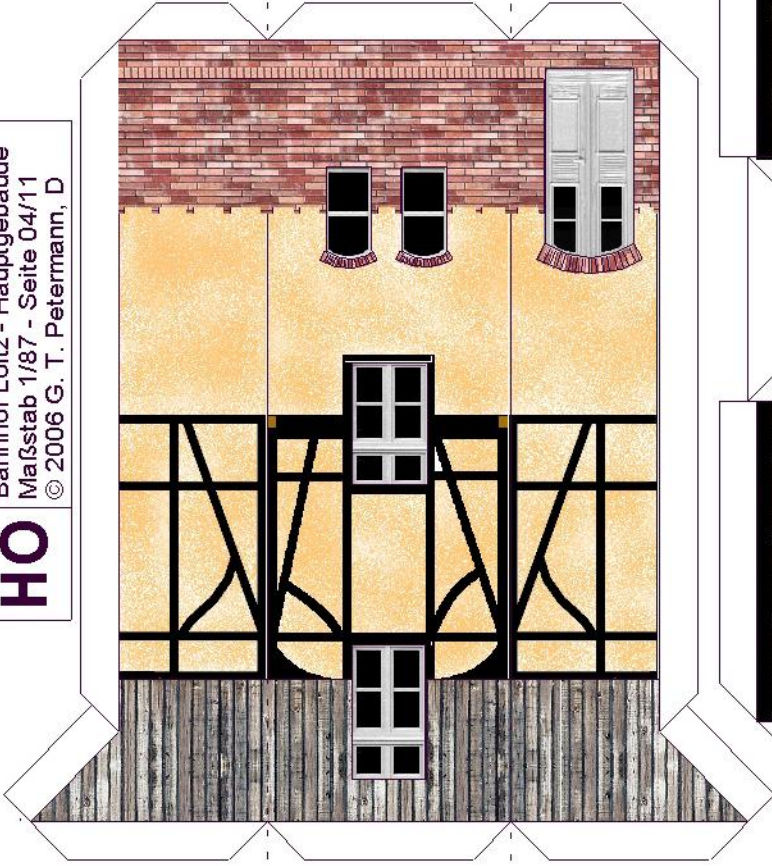




G1a

Innenwand

Erker (3)



Holzverkleidung (alternativ)

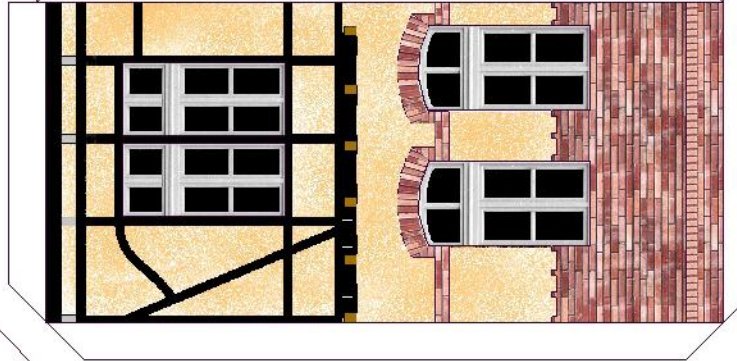


H-01

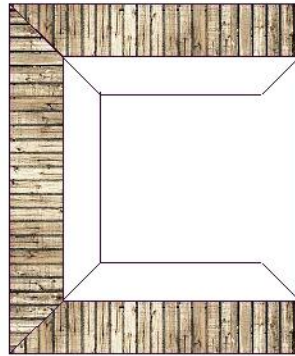
hier Wartehalle ankleben

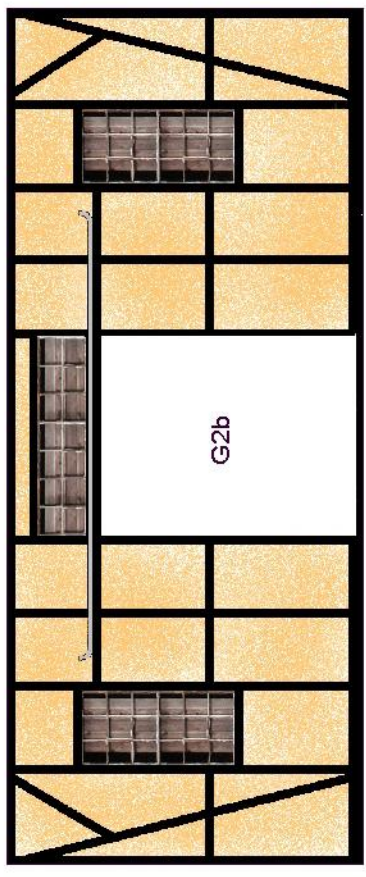
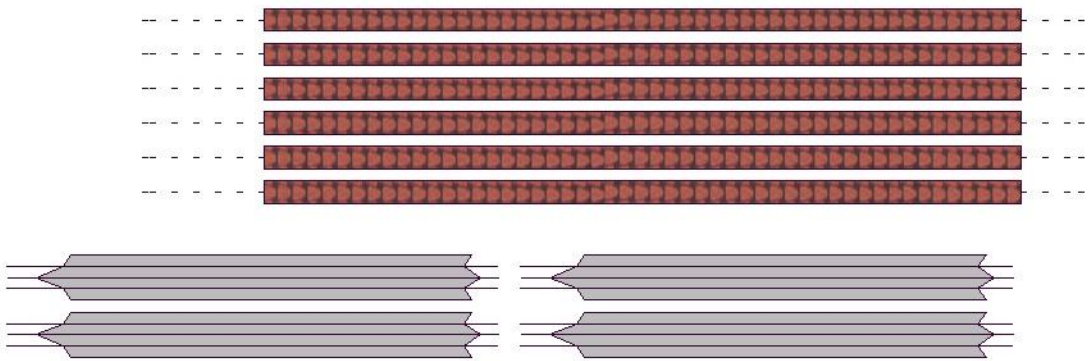
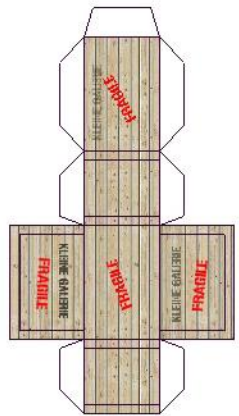


hier  
Erker (3)  
ankleben

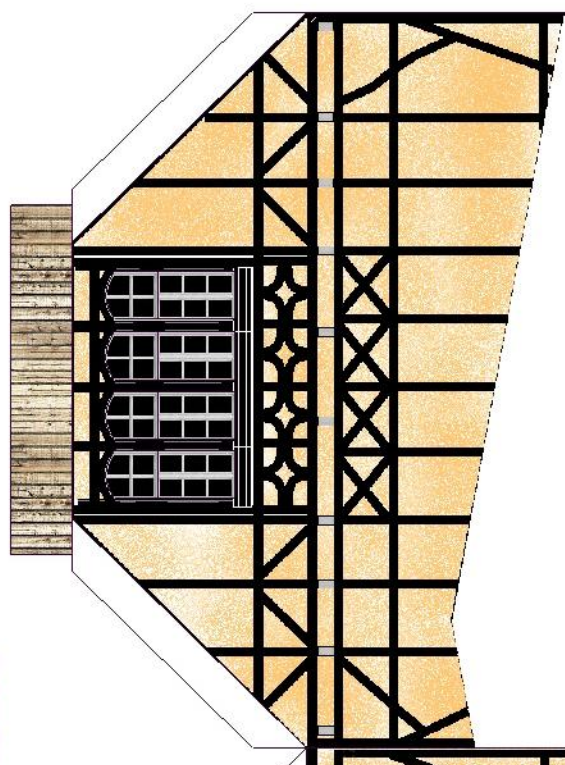


Dachunterseite Erker/Treppenhaus



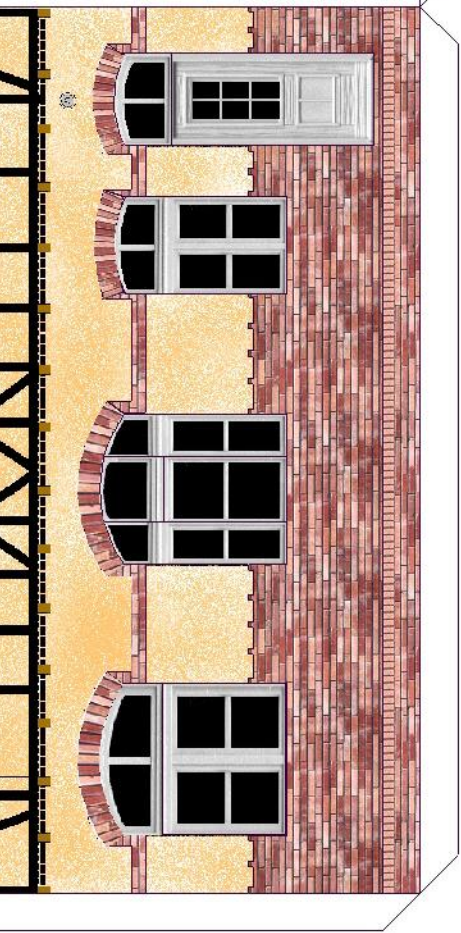


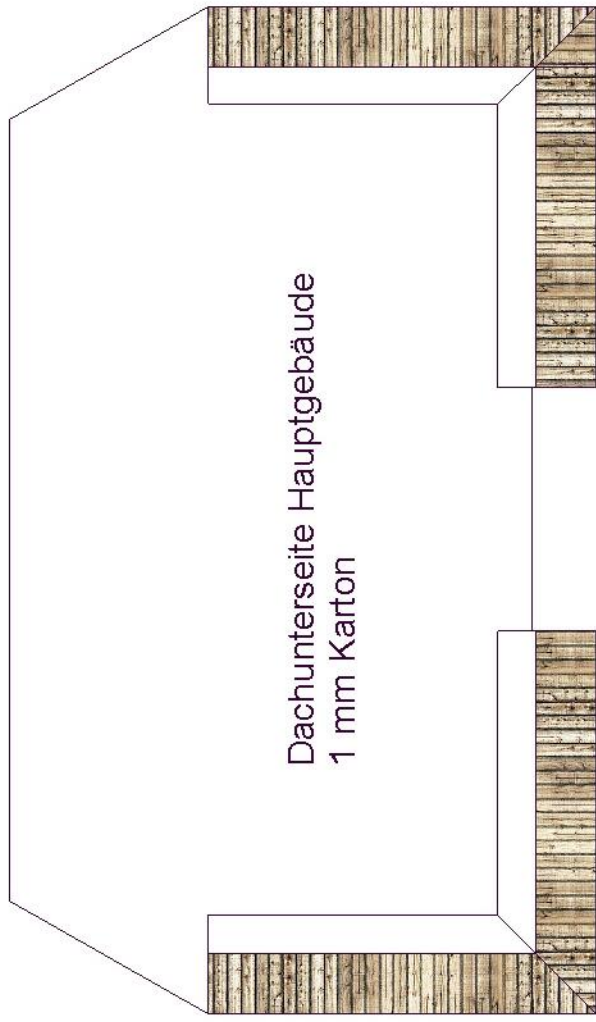
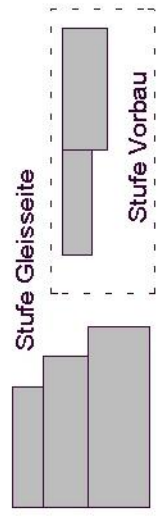
Innenwand



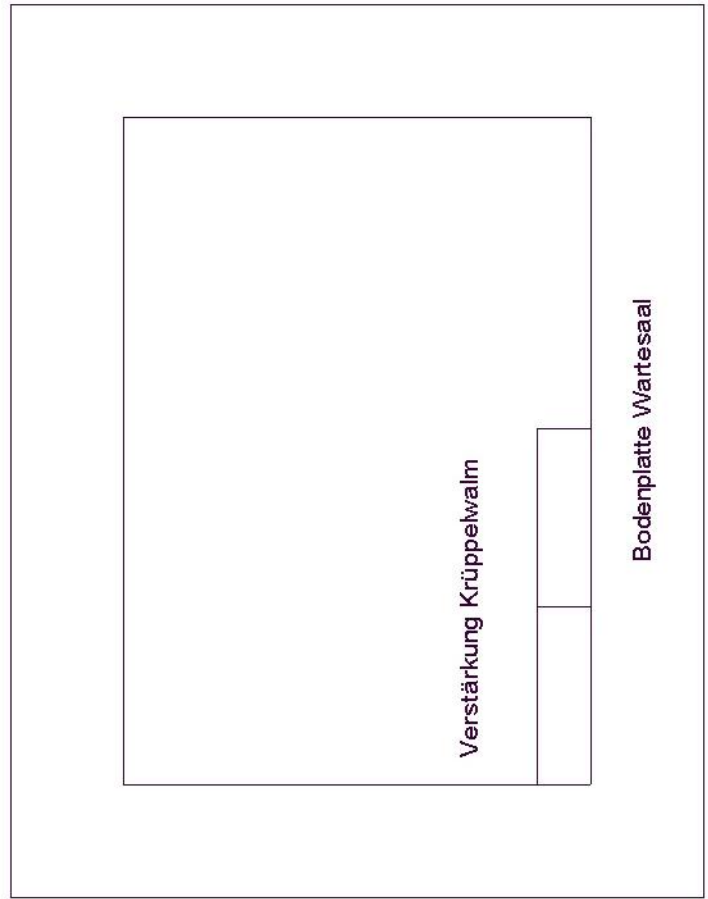
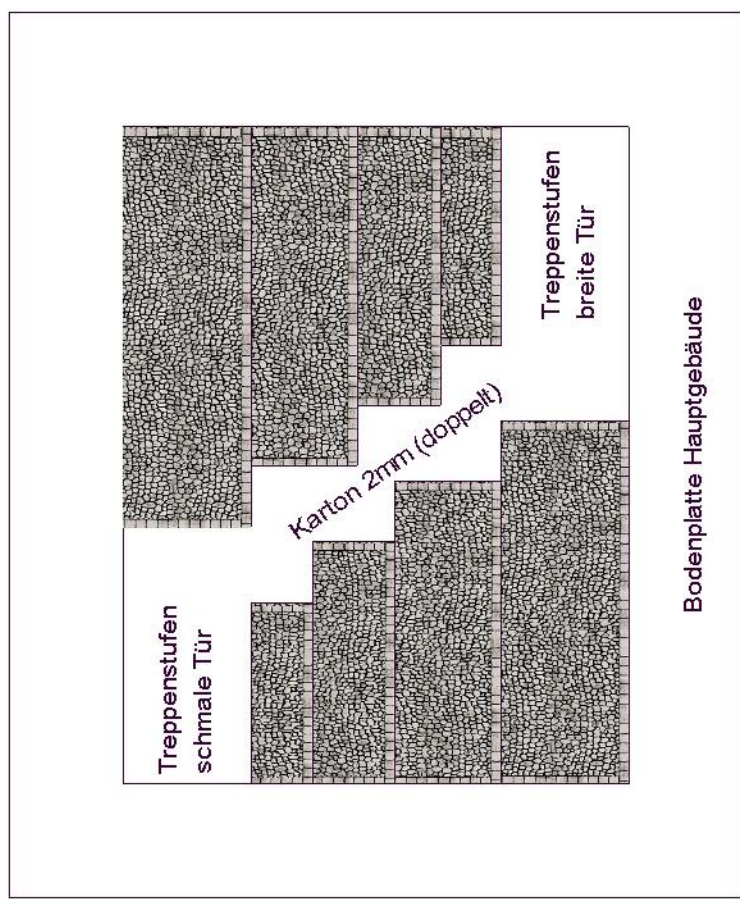
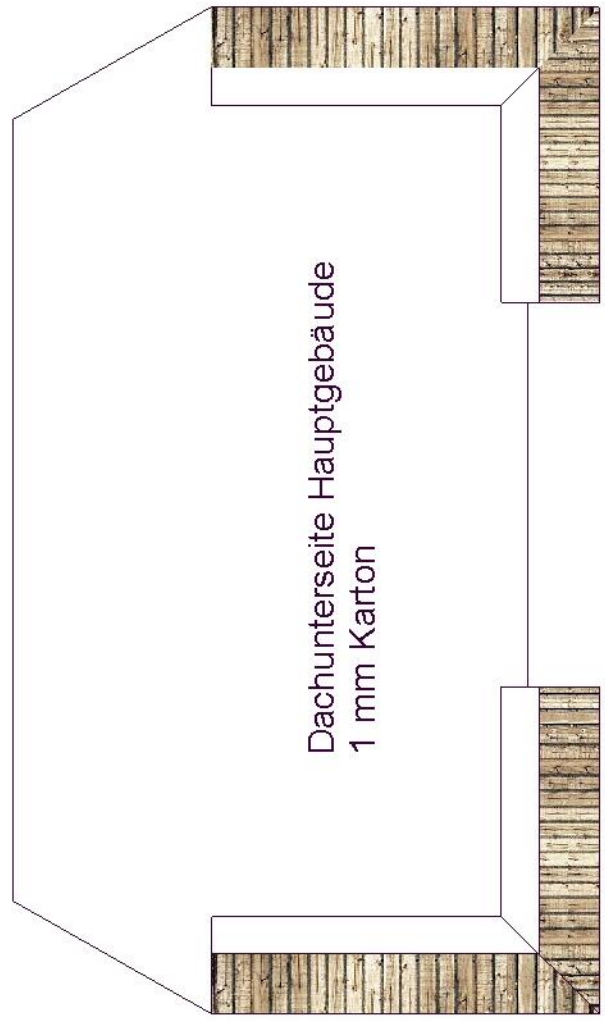
H02

hier Güterschuppen ankleben

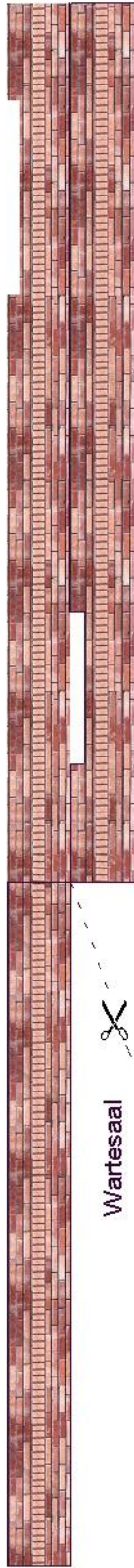
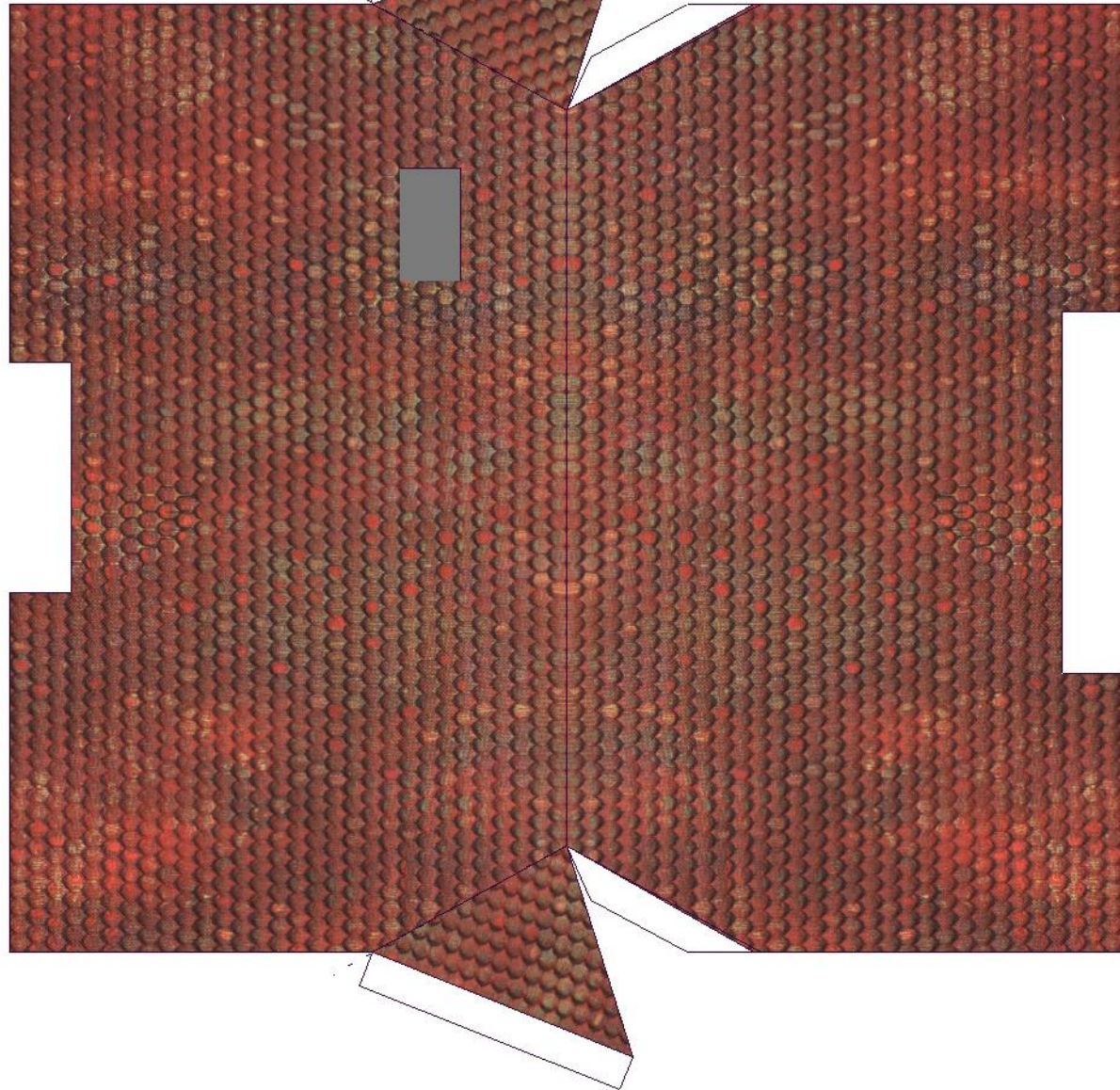




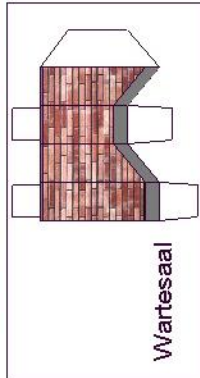
Karton 1mm



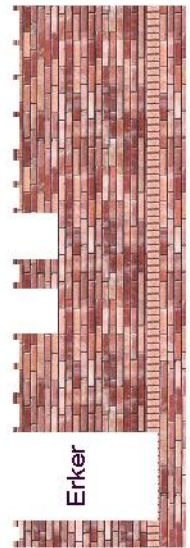
Dach Hauptgebäude (1+2)



Wartesaal



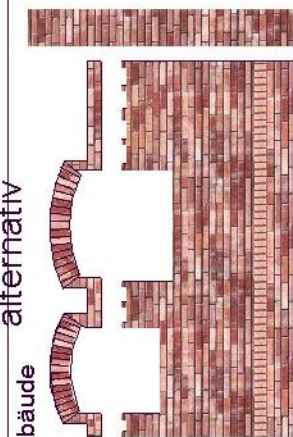
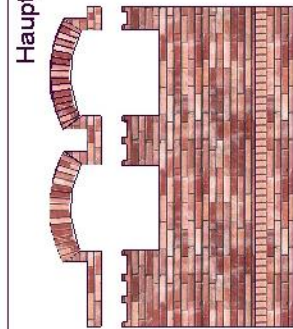
Wartesaal



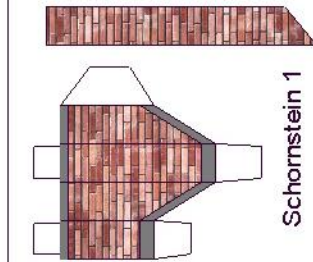
Erker

alternativ

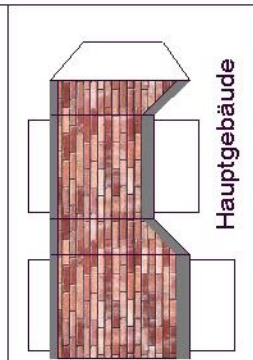
Hauptgebäude



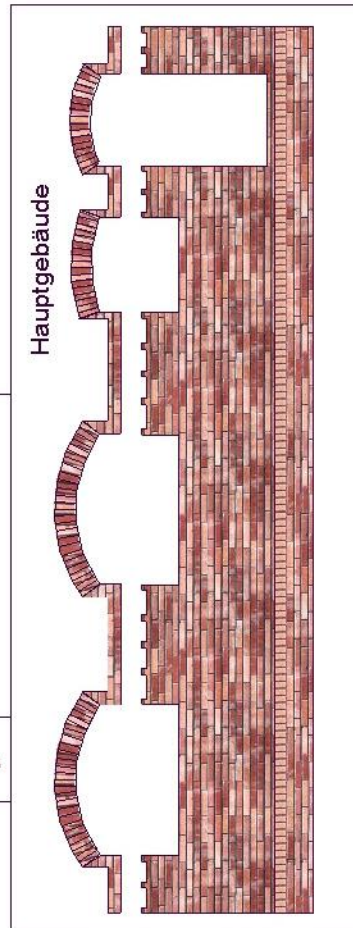
Erker



Schornstein 1



Hauptgebäude



Hauptgebäude

alternativ

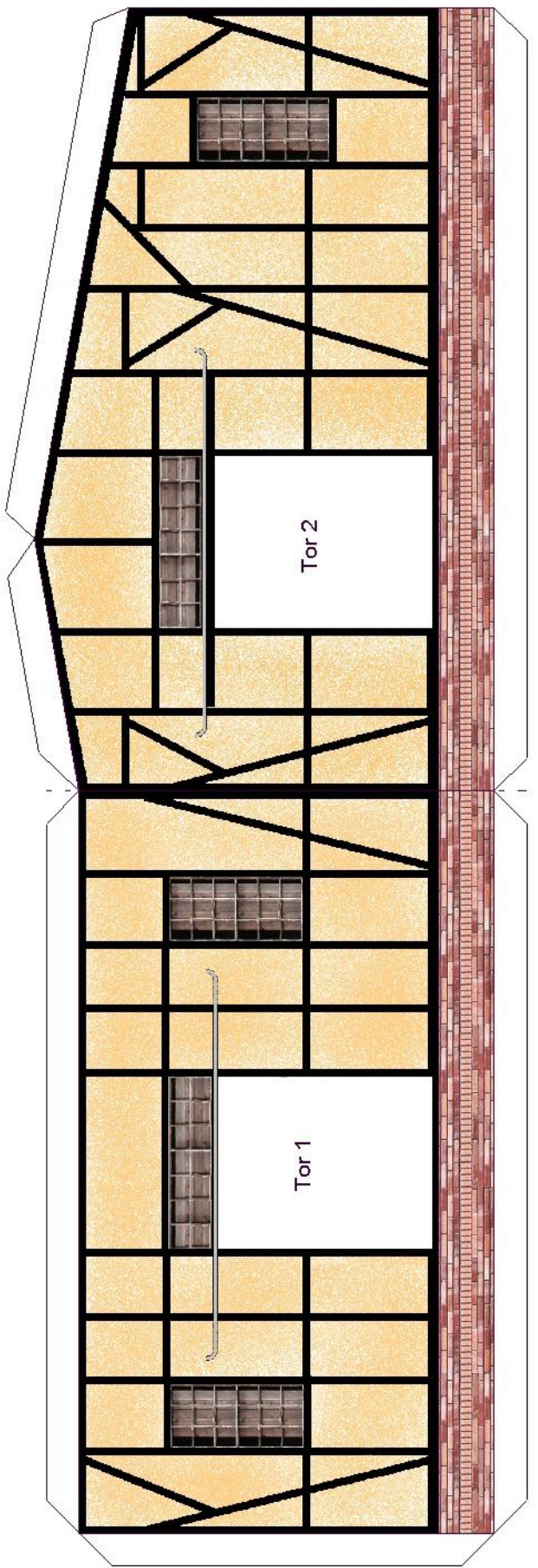
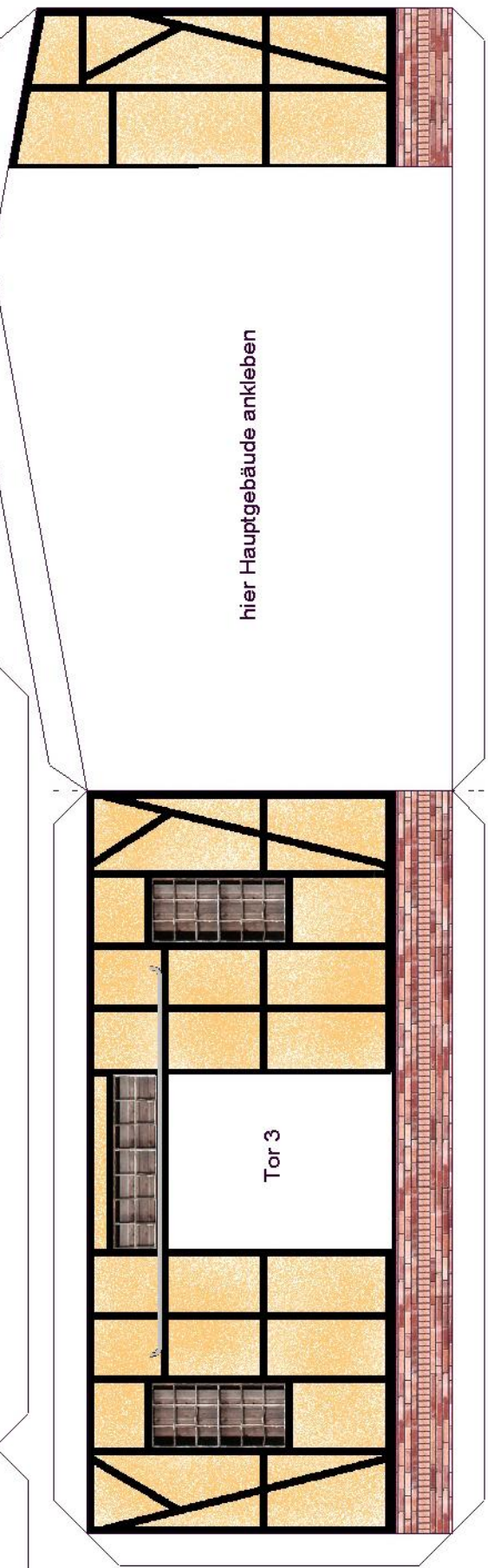
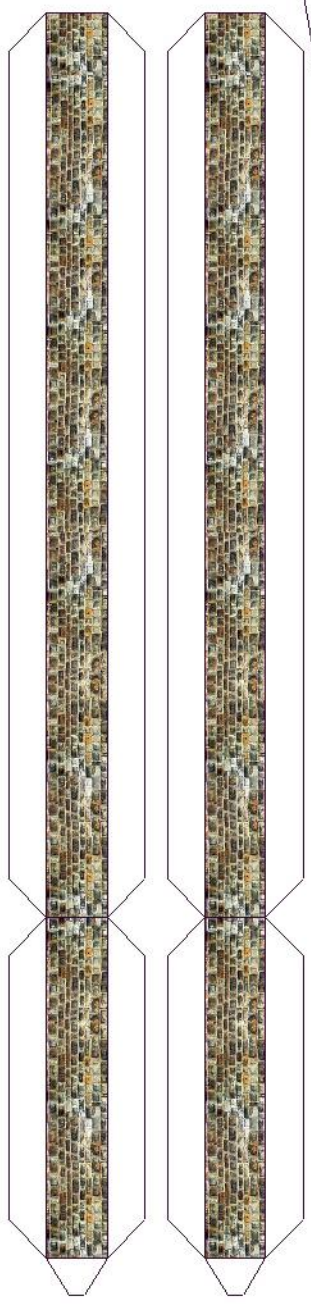
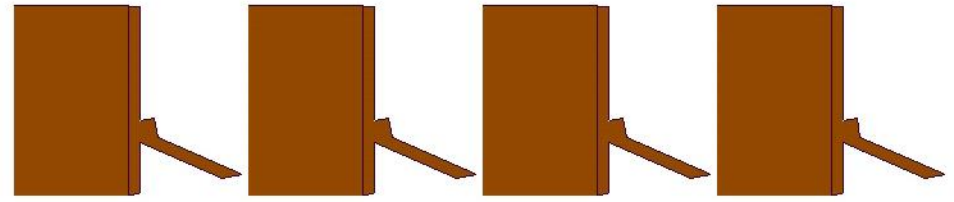
Güterschuppen

hier Hauptgebäude ankleben

Tor 2

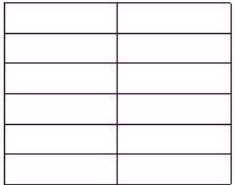
Tor 1

Tor 3

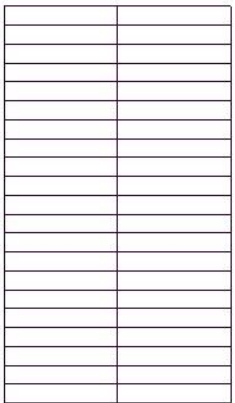




Karton - 3 mm

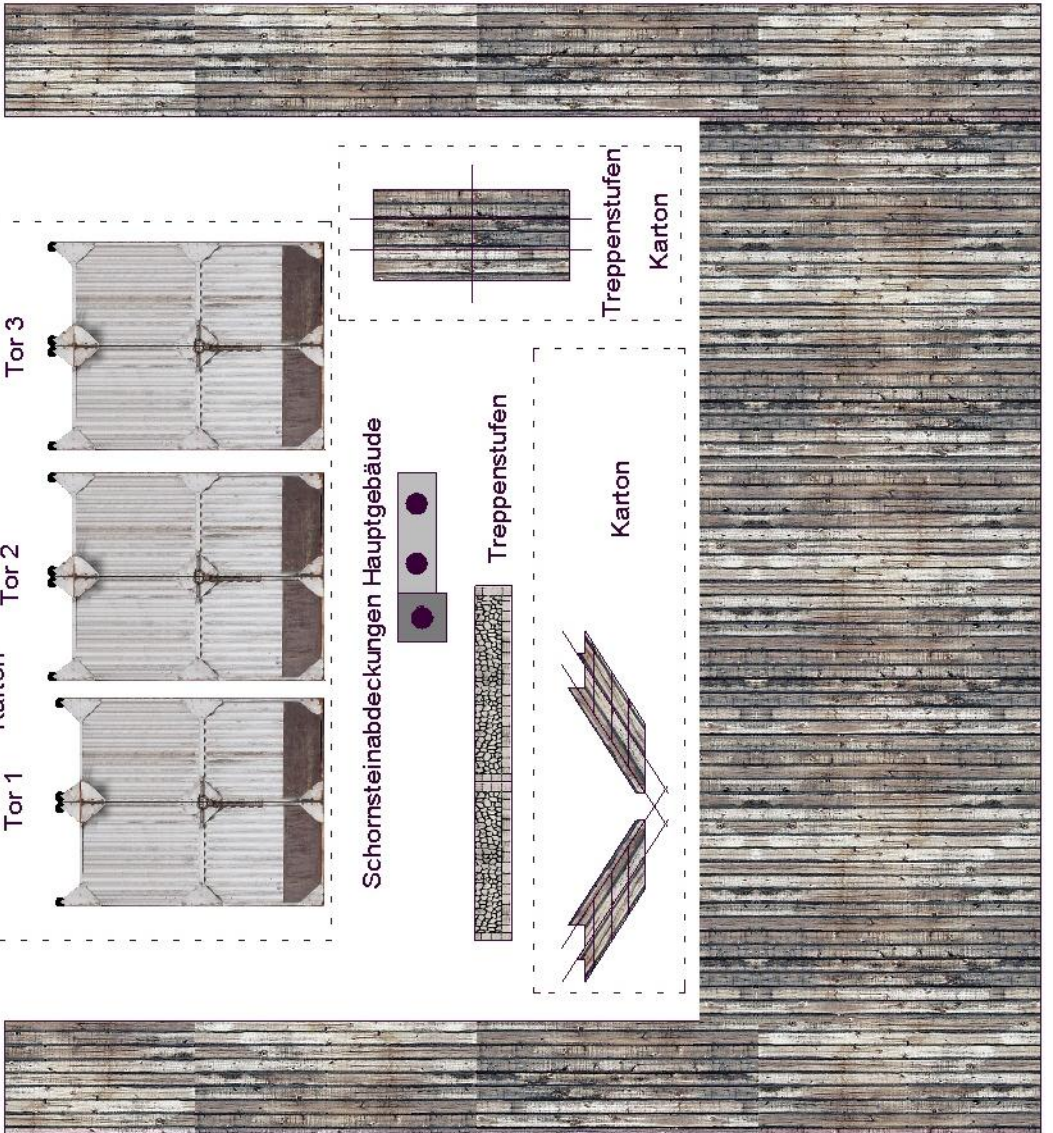
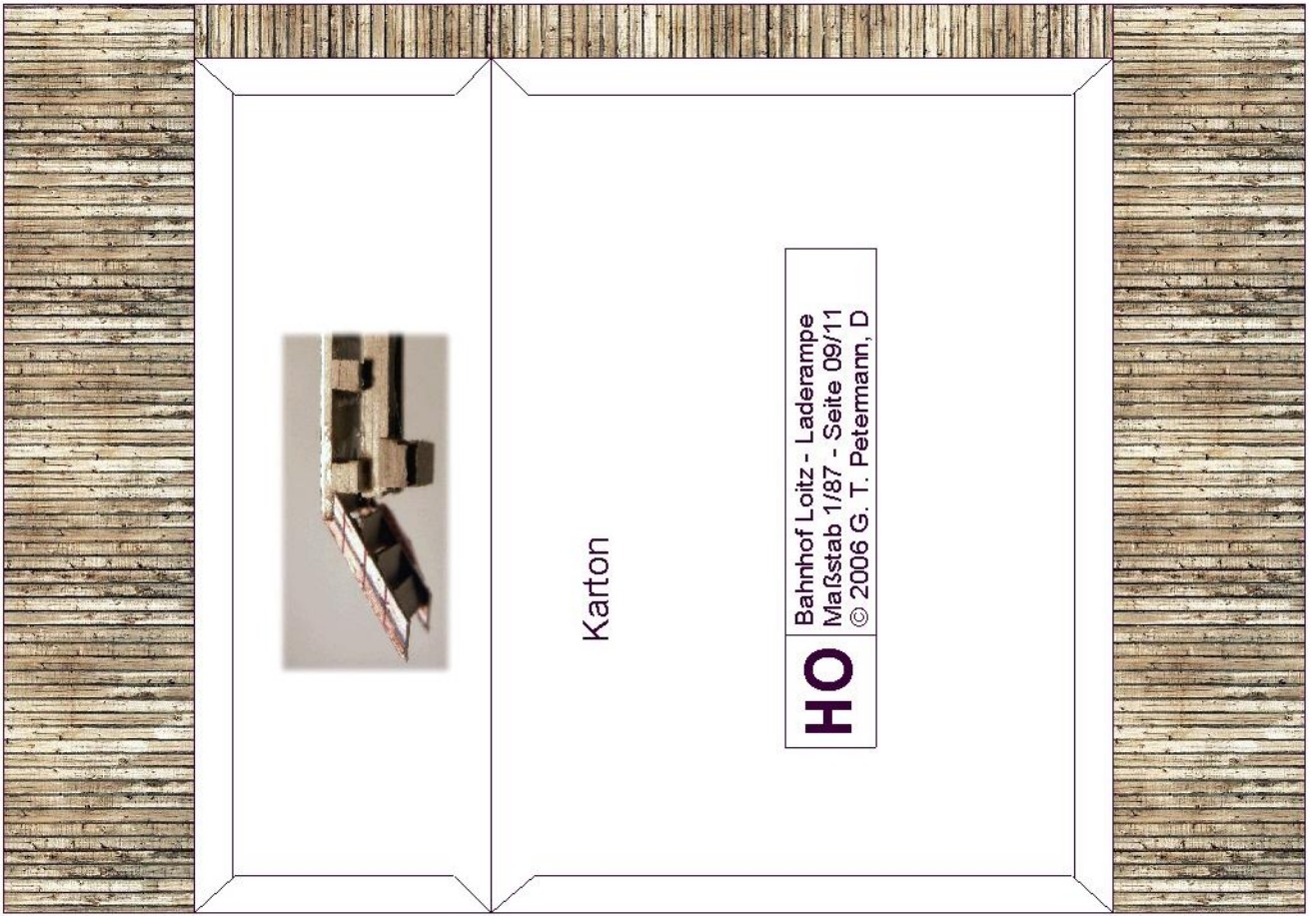
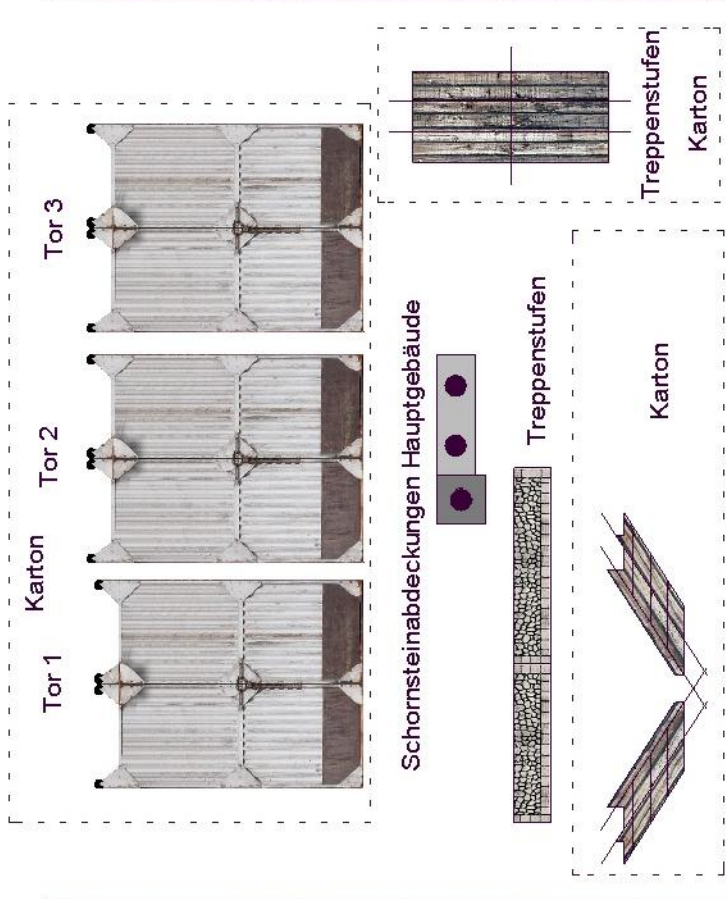


Karton - 2 mm

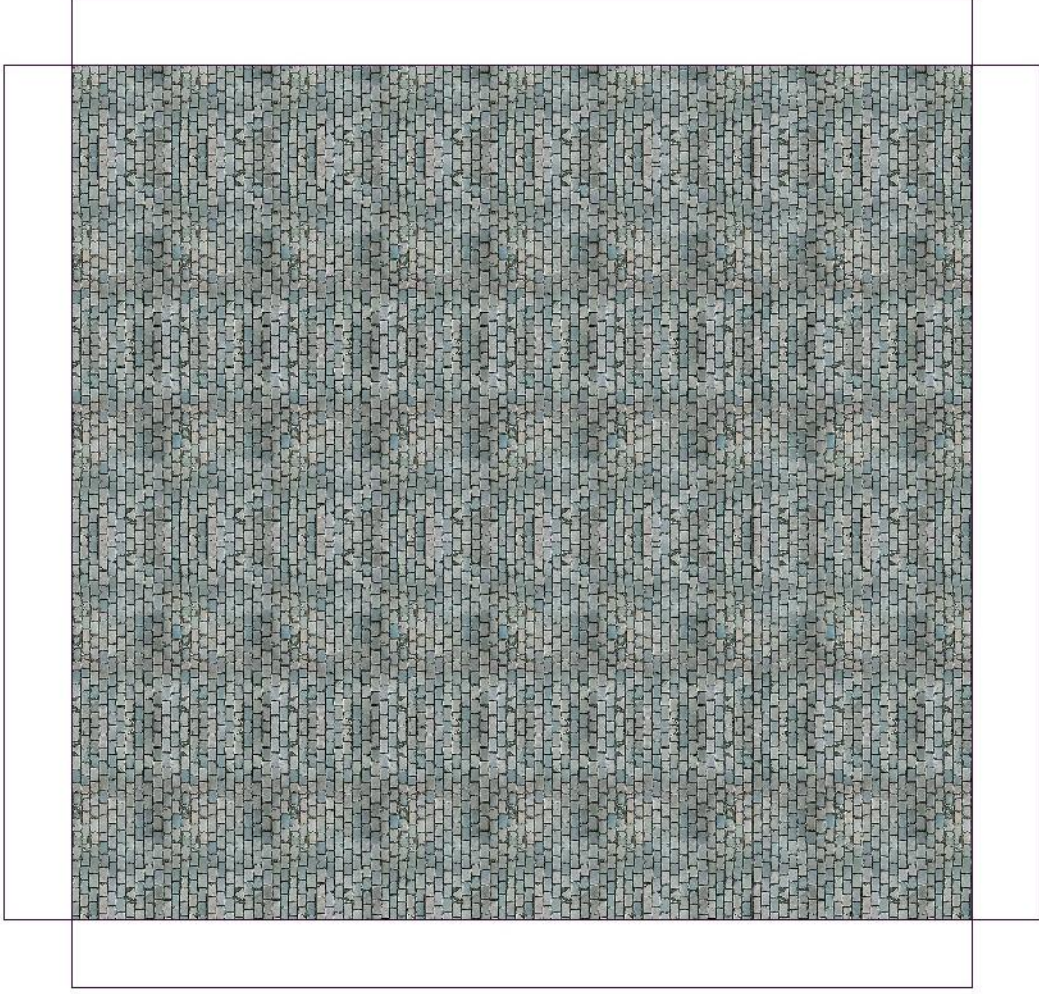


Karton - 3 mm

Laderampe - Unterbau



Karton



Boden Güterschuppen



Dach Güterschuppen

W01

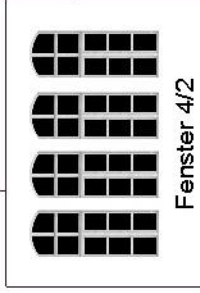
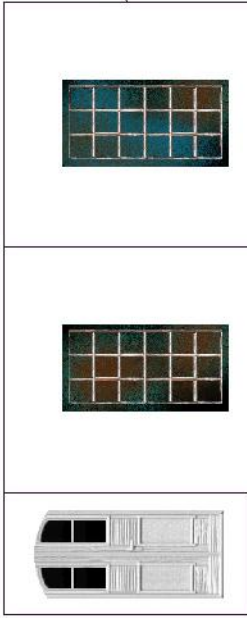
W02

W01

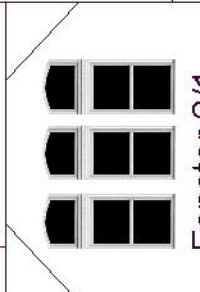
W02

W01

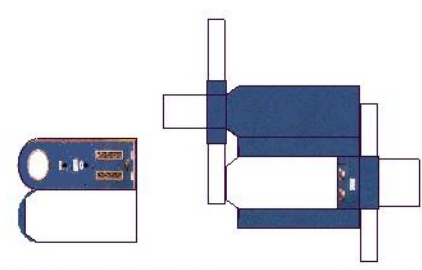
W02



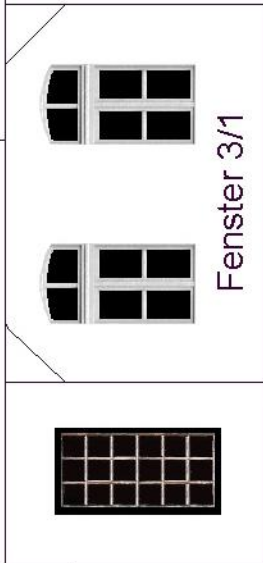
Fenster 4/2



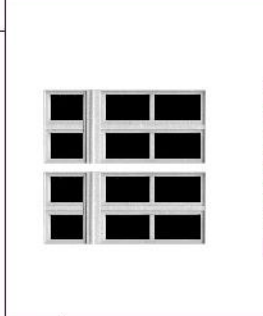
Fenster 2/1



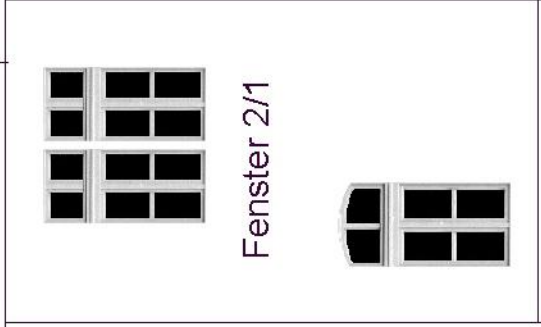
Schokoladenautomat



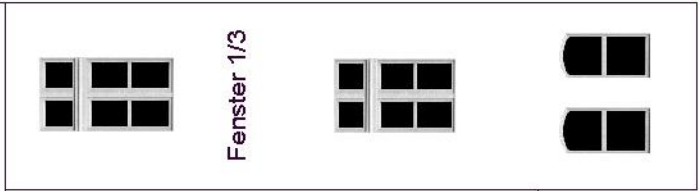
Fenster 3/1



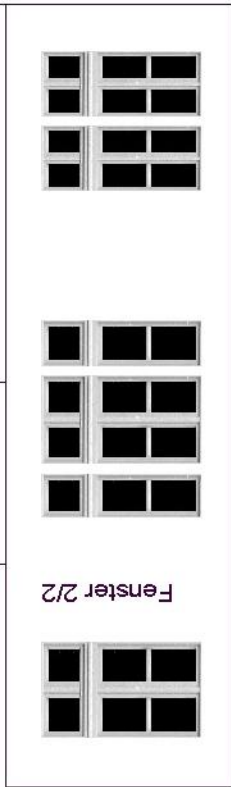
Fenster 1/1



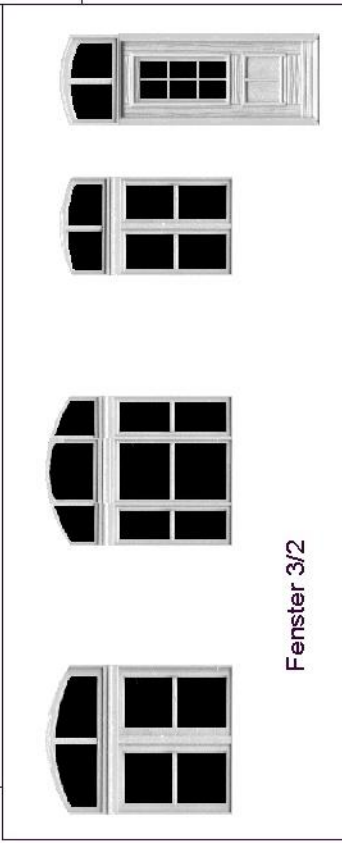
Fenster 2/1



Fenster 1/3



Fenster 2/2



Fenster 3/2

